



Vessel name	Built	IMO no.	Flag
BBC Maine	2007	9357200	Antigua & Barbuda
BBC Georgia	2008	9357224	Antigua & Barbuda
BBC Vermont	2008	9357236	Antigua & Barbuda
BBC Florida	2009	9433286	Antigua & Barbuda
BBC Maryland	2010	9433298	Antigua & Barbuda
BBC Michigan	2010	9501241	Antigua & Barbuda
BBC Arizona	2010	9501253	Antigua & Barbuda

MAIN DATA

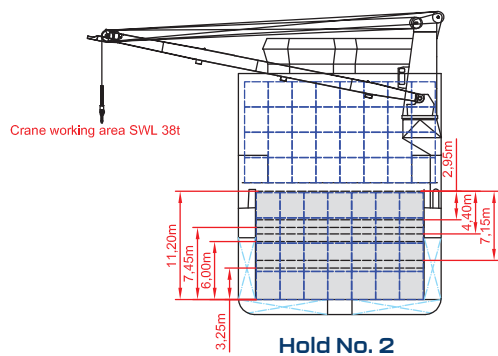
Vessel type	Multipurpose Heavylifter
Classification	GL + 100 A5 MPV E3 G IW BWM-F + MC E3 AUT strengthened for heavy cargoes, equipped for the carriage of containers, equipped for the carriage of dangerous goods NKK – NS, MNS (M0), IWS, BWTS, GRAB, Ice Class IA, equipped for the carriage of dangerous goods (BBC Florida, BBC Georgia, BBC Vermont)
GT/NT	9,620 / 4,260
Deadweight (summer)	12,780 mt
Max. draft (summer)	8.00 m
Length o.a.	138.50 m
Length between pp.	130.71 m
Breadth moulded	21.00 m
Depth to main deck	11.00 m
Height above keel	40.09 m
Max. Speed	15.0 knots
Fuel consumption	25.0 mt RMG 380 fuel per day at sea 2.5 mt MGO DMA per day in port without gear 3.0 mt MGO DMA per day in port with gear

HOLDS/HATCHES/CRANES

Cargo hold capacity	15,952 cbm / 563,340 cbft
Floor space under deck	2,810 sqm / 30,247 sqft
Floor space on deck	1,480 sqm / 15,931 sqft
Cranes	2 NMF cranes situated portside 150 mt capacity each / 300 mt capacity combined
Container intake	665 TEU nominal 528 TEU at 14 mt homogeneously loaded 50 reefer plugs on deck
Deck strengths per sqm	16.00 mt on tanktop 2.50 mt on tweendeck in hold 1 and hold 2 (upper position) 4.00 mt on tweendeck in hold 2 (middle and lower position) and hold 3 1.75 mt on hatchcovers

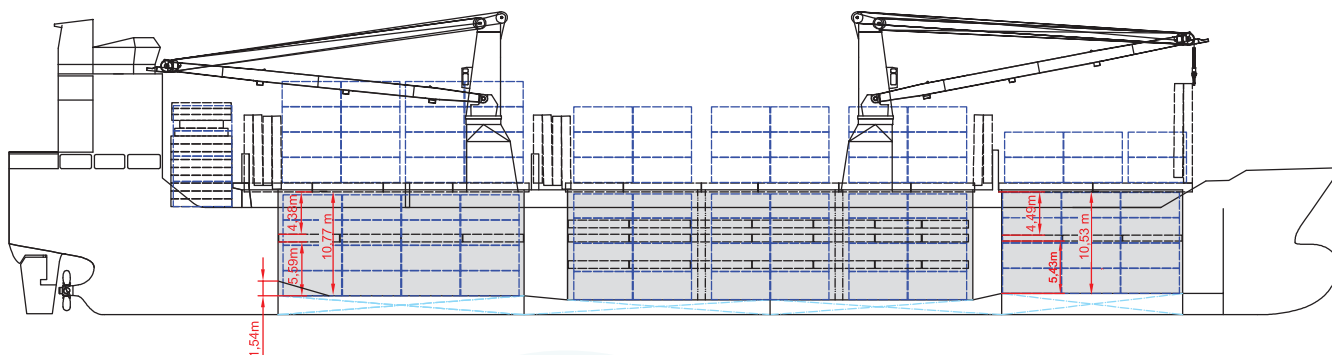
SPECIAL EQUIPMENT/FEATURES

Fitted for trading Great Lakes and Australia.
Fitted for carriage of dangerous goods of all IMO classes.

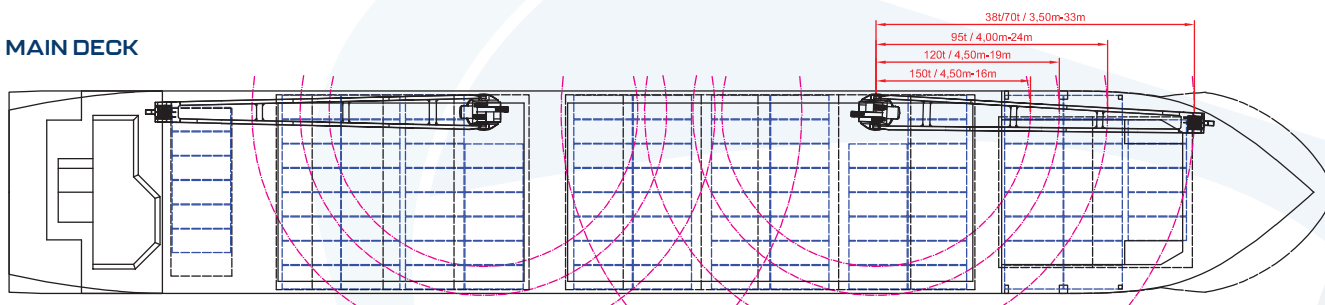


BBC Maine
BBC Georgia
BBC Vermont
BBC Florida
BBC Maryland
BBC Michigan
BBC Arizona

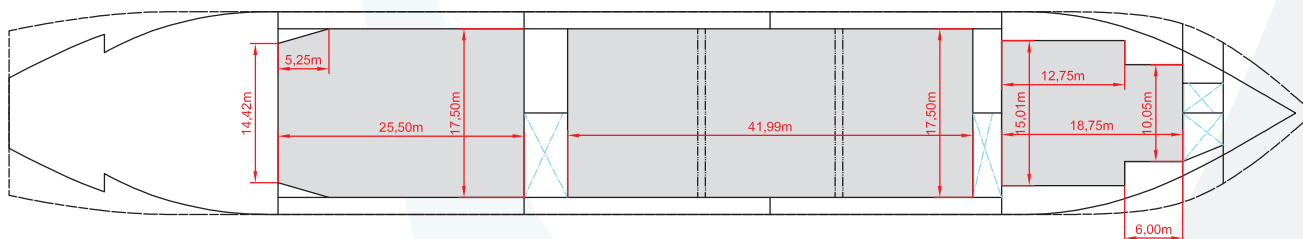
SIDE VIEW



MAIN DECK



TWEENDECK



HOLDS & DOUBLE BOTTOM

